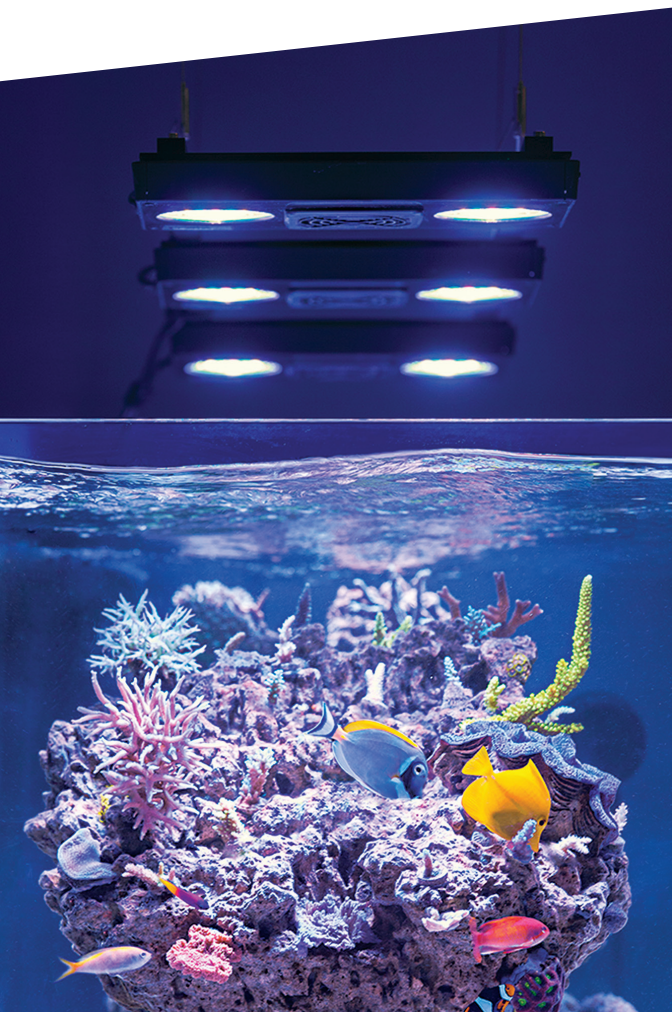




Revolutionary Aquarium Technology

Inspired by Mother Nature.
Engineered by EcoTech Marine.

Now in our second decade, EcoTech Marine continues to revolutionize the way people think about aquarium technology. Our technologically superior products produce unmatched performance – and our commitment to elegant design minimizes the visual intrusion into your aquarium.





EcoTech Marine: The Future of Your Aquarium

Revolutionary Reef Technology

EcoTech Marine has set new standards for equipment in reef aquariums. Our entire family of products is purpose-engineered to work together to improve the health of your ecosystem and enhance the natural beauty of your tank.

Highly Controllable By Design

Our web-based equipment command center, EcoSmart Live, gives you complete control over your tank anywhere you have an Internet connection. Enjoy peace of mind, knowing your reef and its inhabitants are cared for – no matter where life takes you.

Future-Proof Solutions

Our product lines are designed for backward compatibility, giving you the most mileage out of your purchases. Periodic feature updates increase the functionality of our award-winning products – including the ones you may already own!



Your Web-Based Equipment Command Center

Control and customize your Radion LED lights, VorTech propeller pumps* and the entire family of EcoTech Marine products any time, anywhere. Access EcoSmart Live through your smartphone, tablet or computer – anywhere you have an Internet connection.

Customize Your Tank, 24/7/365

No matter where you go, your tank is right there with you – and so is the ability to control and customize everything in it. Choose one of the many pre-configured Radion lighting templates, create your own by adjusting each color channel individually, or simply monitor your reef from afar. With EcoSmart Live, how much you control is up to you.

ReefLink



Take EcoSmart Live to the next level with increased flexibility. ReefLink eliminates the need to physically connect your Radion to a Mac or PC via USB, so your tank is always wirelessly connected and always accessible.

Radion LED Lighting



Full-Color Light Spectrum

Sunlight is full spectrum – so is the Radion. Use any combination of color and intensity to achieve the look and growth that best fit your needs.

Fully Customizable Color and Time Settings

Program your Radion with the web-based EcoSmart Live configuration tool. Use one of many pre-configured templates or create custom settings all your own.

Multi-Fixture Communication

If your reef is large enough to require more than one Radion, multiple fixtures will communicate by RF – allowing for easy multi-unit configuration.

Integration with VorTech Pumps

Synchronize Radion lights with VorTech pumps through EcoSmart Live and they will work hand-in-hand for Night, Day, Feed and other modes.

TIR Lenses

EcoTech Marine's TIR lenses direct the maximum amount of light possible, enabling you to get the most out of your Radion LED lighting.



Hanging Kits

Radion LED lights come equipped with mounting eyelets. To hang two or more Radions, EcoTech offers premium hanging kits and rail kits in different sizes for endless customization.



For additional information about EcoTech products, please visit us at www.ecotechmarine.com.

Radion LED Lighting



- Wireless Control through EcoSmart Live
- Synchronization with VorTech Pumps
- Fully Customizable Settings
- Sunlight Color Spectrum
- Multi-Fixture Automation

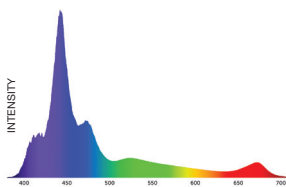
Radion™ XR30w

All your tank needs in an award-winning LED

- 3rd Generation
- Full Spectrum RGB +UV
- 30x30 inch (76x76cm) coverage*
- 36 inch (90cm) effective penetration
- 38 LEDs, 7 colors, 6 channels
- 150 watts max consumption

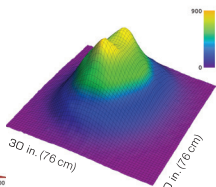
OUTPUT SPECTRUM GRAPH

Chart shows max output on all channels.



PAR DISTRIBUTION

Max Par: 900
Chart shows distribution 12 inches (30.48cm) below fixture



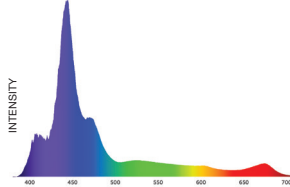
Radion™ XR30w Pro

Professional-grade lighting for home reef aquarists

- 3rd Generation
- Full Spectrum RGB +UV
- 30x30 inch (76x76cm) coverage*
- 36 inch (90cm) effective penetration
- 42 LEDs, 8 colors, 6 channels
- 170 watts max consumption

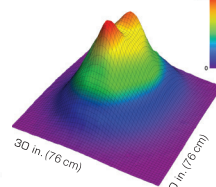
OUTPUT SPECTRUM GRAPH

Chart shows max output on all channels.



PAR DISTRIBUTION

Max Par: 1100
Chart shows distribution 12 inches (30.48cm) below fixture



* Wide angle optic accessory increases coverage to 36x36" (90x90cm).

* Wide angle optic accessory increases coverage to 36x36" (90x90cm).

VorTech Pumps



The VorTech™ line features low-profile, broad-flow pumps for aquariums ranging from 2.5 gallons to 1,000+ gallons (9.5 to 3,800+ L).

New Standards for Flow

VorTech pumps produce unmatched broad yet gentle flow that you can control – eliminating dead spots and enhancing the health of your ecosystem.

Size Does Matter

The VorTech line features the smallest propeller pumps on the market – especially when you consider how little space they occupy inside the aquarium.

Watch Your Aquarium, Not Your Pump

The VorTech is beautiful in its simplicity. The motor is outside of the aquarium, allowing it to be positioned where it is least visible.

Battery Backup



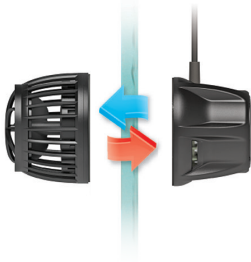
In a tank with no flow, fish and corals begin to die within four hours. The Battery Backup accessory will buy you valuable time by keeping your VorTech pump running and your tank oxygenated in the event of a power loss.*

* Backup usage information available at www.ecotechmarine.com

VorTech Pumps

Magnetically Coupled

A magnetic couple transmits motion through your aquarium glass and clamps the VorTech against your tank. No drilling allows you to easily reposition the pump at any time.



Wireless Connectivity

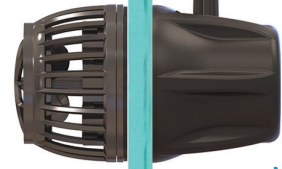
Communicate wirelessly with other VorTech pumps and Radion lights for even greater control and flexibility.

Eco-Friendly

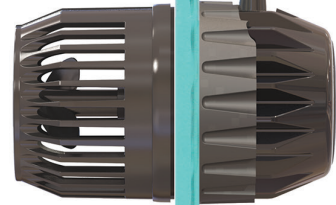
External motor mount means less heat in the water, reducing the need for cooling, and the advanced brushless motor design also reduces electricity consumption.

Completely Safe

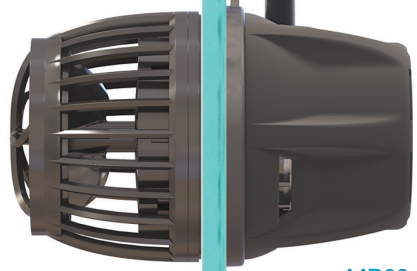
No electrical components ever touch the water.



MP10
Tanks with
2.5-50+
gallons



MP40
Tanks with
50-500+
gallons



MP60
Tanks with
120-1,000+
gallons

Modes

	TANK SIZE	FLOW GPH (LPH)	WATTAGE	MAX. TANK THICKNESS (mm)	WIRELESS	ECOSMART	CONSTANT	RANDOM	PULSE	NIGHT
MP10w ES	2.5-50+ gal. (9.5-190+ L)	200-1,575 (750-6,000)	8-18	3/8" (9.5mm)	✓	✓	✓	✓	✓	✓
MP40w ES	50-500+ gal. (190-1,800+ L)	1,000-3,200 (3,785-12,100)	9-28	3/4" (19mm)	✓	✓	✓	✓	✓	✓
MP60w ES	120-1,000+ gal. (450-3,800+ L)	3,500-7,500 (13,000-28,000)	10-60	1" (26mm)	✓	✓	✓	✓	✓	✓

EcoTech Elements

EcoTech is more than the best in technologically advanced aquarium equipment. The developing Elements line brings the same thought and quality to the tools and everyday essentials used in the art of reef keeping.



Coral Glue

EcoTech Elements Coral Glue sets a new standard for ease of use, curing time, versatility and durability. Coral Glue sets underwater – even on rocks glued sideways or upside down.



Propagation Kit

Our new Coral Propagation Kit provides everything you need for complete customization and control of hard and soft coral. It's the highest-quality, longest-lasting set of coral fragging tools anywhere.



Frag Plugs

Kiln-fired ceramic frag plugs – exclusively designed for coral adhesion and standard egg crate frag racks. Available in natural, purple & black.

For additional information about EcoTech products, please visit us at www.ecotechmarine.com.