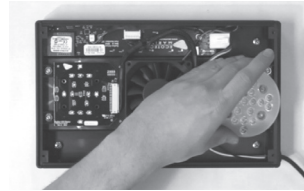




STEP 8: CAREFULLY DISLodge THE CLUSTERS FROM THE THERMAL COMPOUND ON THE HEAT SINK AND SET ASIDE.



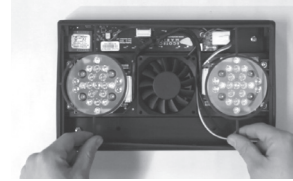
STEP 7: VERY CAREFULLY DISCONNECT THE WIRE HARNESS FROM THE DRIVER BOARD.



STEP 6: REMOVE THE TIR LENSES AND SET ASIDE.



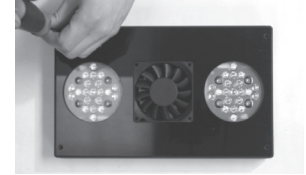
STEP 5: TAKE THE 2.5MM HEX KEY AND REMOVE ALL OF THE HEX SCREWS(4) FROM BOTH OF THE TIR LENSES AND SET ASIDE.



STEP 4: REMOVE THE PAPER GASKET AND SET ASIDE.



STEP 3: LIFT OUT THE LENS FRAME AND SET ASIDE.



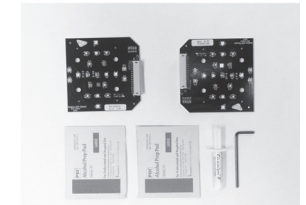
STEP 2: REMOVE PHILLIPS LENS FRAME SCREWS (4) AT OUTER CORNERS AND SET ASIDE.



STEP 1: REMOVE PHILLIPS FAN SCREWS (4) AND REMOVE FAN GRILL ASSEMBLY (2 PIECES) AND SET ASIDE.



TOOLS NEEDED:
Phillips screwdriver, Small flathead screwdriver and gloves



INCLUDED IN G3 CLUSTER RETROFIT KIT:
G3 Clusters (2), Alcohol swabs (2), Thermal compound applicator (1), 2.5mm hex key (1)

UPGRADING TO G3 CLUSTERS FOR THE RADION XR30w

View the video at
www.ecotechmarine.com/g3clusterinstall/



Installation of G3 clusters will increase the light output from your Radion fixture. Overlighting your tank may cause damage to inhabitants.



- Before starting this process, ensure that your Radion XR30w is disconnected from its power supply.
- Place the Radion on a soft surface to protect the cover plate from scratches.
- EcoTech Marine recommends the use of gloves during this process to prevent any fingerprints from getting on the LED clusters. Fingerprints could cause a decrease in light output.
- EcoTech Marine is not responsible for any damage caused to the Radion, your aquarium and its livestock, or your property as a result of improper use of the G3 Cluster Kit.
- Installation of the G3 Cluster Kit will not affect your existing warranty of the Radion XR30w.

View the video at
www.ecotechmarine.com/g3clusterinstall/



610 954 8480
800 785 0338 (toll free)
888 500 2907 (fax)

XR903 / XR904 RETROFIT CLUSTER KIT

View the video at
www.ecotechmarine.com/g3clusterinstall/

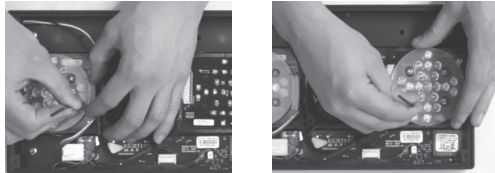


DO NOT
OVERTIGHTEN SCREWS.
IT MAY STRIP SCREWS OR
DAMAGE THE RADION.

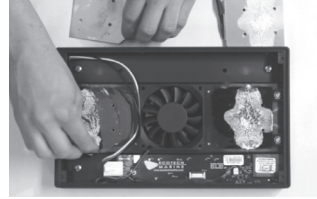
STEP 14: PLACE TIR LENSES OVER LED CLUSTERS, MAKING SURE TO LINE UP LENS AND CLUSTER HOLES.



USING THE INCLUDED 2.5 MM HEX KEY TIGHTEN EACH LENS SCREW WHILE MAKING SURE THAT THE LENSES ARE STRAIGHT. (REPEAT FOR BOTH)



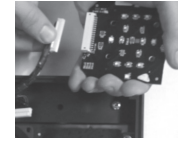
STEP 9: USING INCLUDED ALCOHOL PADS REMOVE THERMAL COMPOUND FROM HEAT SINK AND CLUSTERS.



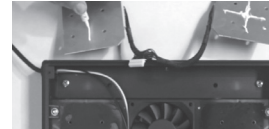
STEP 10: USING A SMALL FLATHEAD SCREW-DRIVER CAREFULLY INSERT THE TIP INTO THE GAP BETWEEN THE CONNECTOR OF THE WIRE HARNESS AND THE CLUSTER VERTICALLY AND GENTLY ROTATE TO LOOSEN CONNECTOR, THEN GENTLY PULL TO REMOVE. SET WIRE HARNESS AND OLD CLUSTERS ASIDE.



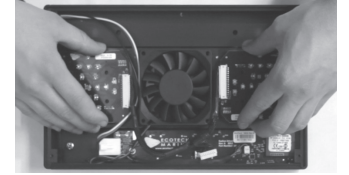
STEP 11: ATTACH NEW G3 CLUSTERS TO THE WIRE HARNESS.



STEP 12: USE THE INCLUDED THERMAL COMPOUND APPLICATOR TO APPLY A THIN BEAD OF THERMAL COMPOUND IN A X PATTERN ON THE BACK OF THE G3 CLUSTERS.



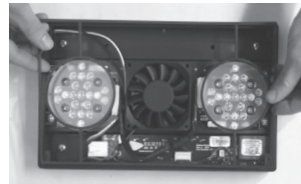
STEP 13: FLIP THE CLUSTERS OVER, PLACE ON THE HEAT SINK MAKING SURE THE EXPOSED CONNECTOR ON THE WIRE HARNESS IS ORIENTED TOWARDS THE DRIVER BOARD. GENTLY PRESS DOWN. MAKE SURE TO LINE UP THE HOLES IN THE CLUSTERS WITH THE HOLES IN THE HEAT SINK.



PLUG THE WIRE HARNESS/CLUSTER ASSEMBLY IN TO THE DRIVER BOARD.



STEP 15: REPLACE PAPER GASKET, ENSURING THAT IT IS FULLY ALIGNED AND SEATED FLAT ON EACH CORNER.



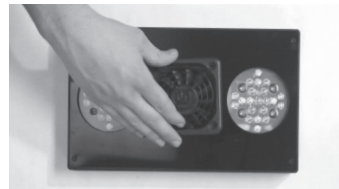
STEP 16: REPLACE ACRYLIC LENS FRAME AND ENSURE AN EVEN, SNUG FIT.



STEP 17: FASTEN PHILLIPS SCREWS (4) INTO EACH CORNER OF THE LENS FRAME.



STEP 18: ALIGN FAN GRILL ASSEMBLY (2 PIECES) AND FASTEN PHILLIPS SCREWS (4) INTO FAN HOUSING.



YOU HAVE SUCCESSFULLY

UPDATED YOUR

RADION XR30w WITH

**G3
CLUSTERS**