

LENS FRAME G3

YOU HAVE SUCCESSFULLY
UPDATED YOUR
RADION XR30W WITH



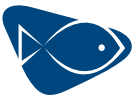
STEP 7: INSERT THE LENS FRAME
SCREWS (4) INTO THE CORNERS OF THE LENS
FRAME AND TIGHTEN.

View the video at
www.ecotechmarine.com/G3lensframeinstall/



610 954 8480
800 785 0338 (toll free)
888 500 2907 (fax)

XR776 RETROFIT LENS FRAME KIT



INSTALLATION OF THE G3 LENS FRAME FOR THE RADION XR30w

View the video at
www.ecotechmarine.com/G3lensframeinstall/



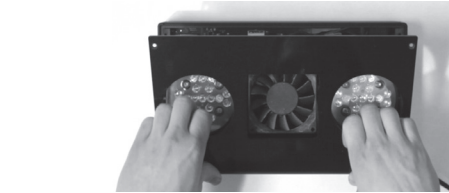
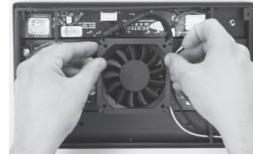
STEP 6: INSERT FAN SHOULDER
SCREWS (4) AND TIGHTEN.



STEP 5: TAKE G3 LENS FRAME, REMOVE
PROTECTIVE FILM AND SET INTO YOUR RADION
HEAT SINK.



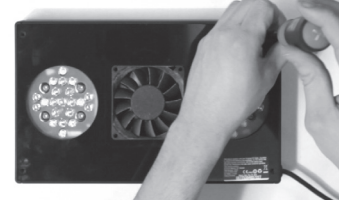
STEP 4: REMOVE THE ADHESIVE BACKING ON
THE FAN GASKET AND ADHERE GASKET TO FAN MAK-
ING SURE TO LINE UP HOLES PRECISELY AND FOLD
DOWN EDGES.



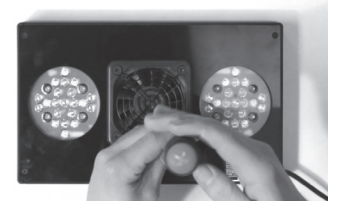
STEP 3: LIFT LENS FRAME OUT OF RADION
AND DISCARD.



- Before starting this process, ensure that your Radion XR30w is disconnected from its power supply.
- Place the Radion on a soft surface to protect the cover plate from scratches.
- EcoTech Marine recommends the use of gloves during this process to prevent any fingerprints from getting on the LED clusters. Fingerprints could cause a decrease in light output.
- EcoTech Marine is not responsible for any damage caused to the Radion, your aquarium and its livestock, or your property as a result of improper use of the G3 lens frame.
- Installation of the G3 lens frame will not affect your existing warranty of the Radion XR30w.



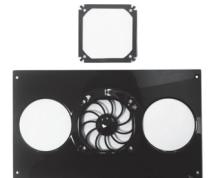
STEP 2: REMOVE PHILLIPS LENS FRAME
SCREWS (4) AT OUTER CORNERS AND SET ASIDE.



STEP 1: REMOVE PHILLIPS FAN SCREWS
(4) AND REMOVE FAN GRILL ASSEMBLY (2 PIECES)
AND SET ASIDE.



TOOLS NEEDED:
Philips screwdriver



INCLUDED IN LENS FRAME KIT:
Lens Frame (1), Fan Gasket (1)