

INSTALLATION OF THE TIR LENS FOR THE RADION XR30w

View the video at www.ecotechmarine.com/tirlens/



- Installation of TIR lenses will increase the light output from your Radion fixture. Overlighting your tank may cause damage to inhabitants.
- Before starting this process, ensure that your Radion XR30w is disconnected from its power supply.
- Place the Radion on a soft surface to protect the cover plate from scratches.
- EcoTech Marine recommends the use of gloves during this process to prevent any fingerprints from getting on the LED clusters. Fingerprints could cause a decrease in light output.
- EcoTech Marine is not responsible for any damage caused to the Radion, your aquarium and its livestock, or your property as a result of improper use of the TIR Lens Kit.
- Installation of the TIR Lens Kit will not affect your existing warranty of the Radion XR30w.



TOOLS NEEDED: Phillips screwdriver, 2.5mm & 3mm Allen keys and gloves



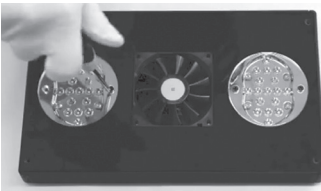
INCLUDED IN TIR LENS KIT: wire ties (2), TIR lens (2)



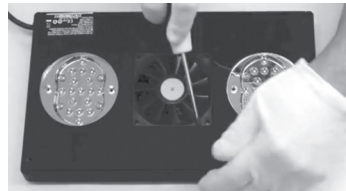
STEP 1:
REMOVE PHILLIPS FAN
SCREWS (4) AND REMOVE FAN
GRILL ASSEMBLY (2 PIECES).



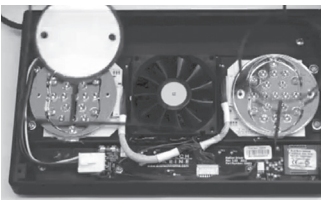
STEP 2:
REMOVE PHILLIPS BOTTOM
PLATE SCREWS (4) AT
OUTER CORNERS.



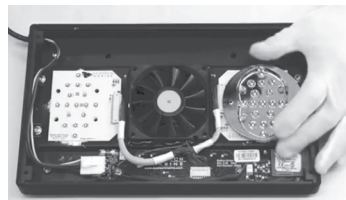
STEP 3:
REMOVE PHILLIPS LENS
SCREWS (2 FOR EACH LENS)
AND REMOVE LENSES.
(Discard reflectors. Keep screws.)



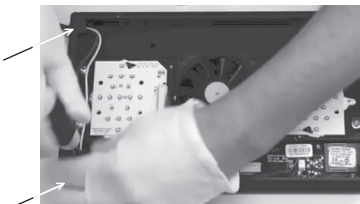
STEP 4:
REMOVE BOTTOM PLATE
USING NOTCH IN FAN AND A
SCREWDRIVER TO FACILITATE.



STEP 5:
REMOVE RUBBER GASKET.



STEP 6:
REMOVE 2.5MM REFLECTOR
SCREWS (4) AND REMOVE
REFLECTOR. (Repeat this process
for second reflector.)



STEP 7:
REMOVE HEATSINK SCREWS
FROM HOUSING SIDE WHERE
WIRES CROSS (2).



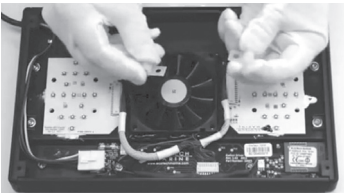
You'll need supplied wire ties (2) and TIR lens (2) to continue.

INSTALLATION OF THE TIR LENS FOR THE RADION XR30w

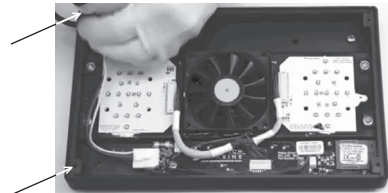


View the video at www.ecotechmarine.com/tirlens/

DO NOT OVERTIGHTEN SCREWS. IT MAY STRIP SCREWS OR DAMAGE THE RADION.



STEP 8:
LOCATE SUPPLIED WIRE TIES (2).



ROUTE WIRES WITH SUPPLIED WIRE TIES AND SECURE TO FIXTURE WITH PHILLIPS CORNER SCREWS (2).

(Wait to tighten screws.)



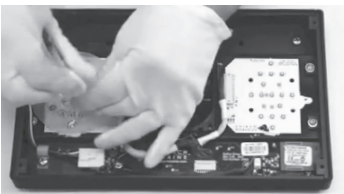
STEP 9:
ROUTE WIRES NEATLY ALONG INSIDE WALL AND TIGHTEN SCREWS ONCE PROPERLY SET.



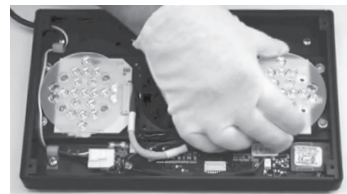
STEP 10:
ENSURE LENS IS ALIGNED AND PLACE IT OVER CLUSTER.



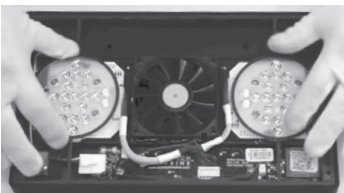
(Adjust wiring if necessary.)



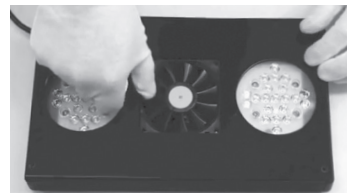
STEP 11:
AFTER CENTERING TIR LENS OVER LED CLUSTER, FASTEN 2.5MM SCREWS (4) INTO HOUSING.



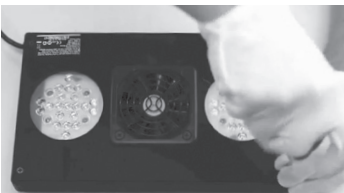
(Repeat this process for second lens.)



STEP 12:
REPLACE RUBBER GASKET, ENSURING THAT IT IS FULLY ALIGNED AND SEATED FLAT ON EACH CORNER.



STEP 13:
REPLACE ACRYLIC BOTTOM PLATE AND ENSURE AN EVEN, SNUG FIT. (Serial number sticker should be visible.)

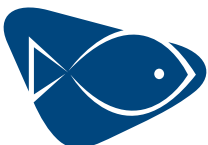


STEP 14:
FASTEN REMAINING PHILLIPS SCREWS (4) INTO EACH CORNER.



STEP 15:
ALIGN FAN GRILL ASSEMBLY (2 PIECES) AND FASTEN PHILLIPS SCREWS (4) INTO FAN HOUSING.

Note: Upon completion of the TIR lens installation, you will no longer need original clear lens plates or reflectors. The TIR lenses are thinner than the original reflector and plate assembly and will be recessed in the fixture. As with the previous assembly, the TIR lenses make a water-resistant seal with the rubber gasket that was reinstalled in Step 12.



YOU HAVE SUCCESSFULLY UPDATED YOUR RADION XR30w WITH **TIR LENSES.**