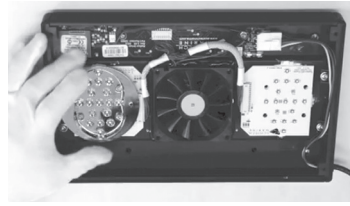


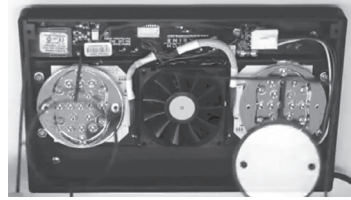
You'll need supplied wire ties (2) and TIR lens (2) to continue.



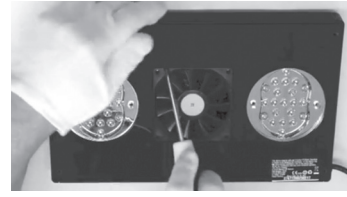
**STEP 7:** REMOVE HEATSINK SCREWS FROM HOUSING SIDE WHERE WIRES CROSS (2).



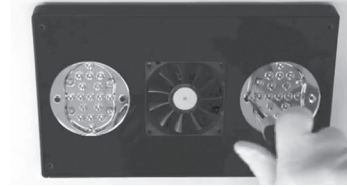
**STEP 6:** REMOVE 2.5MM REFLECTOR SCREWS (4) AND REMOVE REFLECTOR. (Repeat this process for second reflector.)



**STEP 5:** REMOVE RUBBER GASKET.



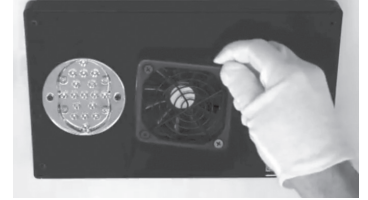
**STEP 4:** REMOVE BOTTOM PLATE USING NOTCH IN FAN AND A SCREWDRIVER TO FACILITATE. (Discard reflectors. Keep screws.)



**STEP 3:** REMOVE PHILLIPS LENS SCREWS (2 FOR EACH LENS) AND REMOVE LENSES.



**STEP 2:** REMOVE PHILLIPS BOTTOM PLATE SCREWS (4) AT OUTER CORNERS.



**STEP 1:** REMOVE PHILLIPS FAN SCREWS (4) AND REMOVE FAN GRILL ASSEMBLY (2 PIECES).



## INSTALLATION OF THE TIR LENS FOR THE RADION XR30w

View the video at [www.ecotechmarine.com/tirlens/](http://www.ecotechmarine.com/tirlens/)



Installation of TIR lenses will increase the light output from your Radion fixture. Overlighting your tank may cause damage to inhabitants.

- Before starting this process, ensure that your Radion XR30w is disconnected from its power supply.
- Place the Radion on a soft surface to protect the cover plate from scratches.
- EcoTech Marine recommends the use of gloves during this process to prevent any fingerprints from getting on the LED clusters. Fingerprints could cause a decrease in light output.
- EcoTech Marine is not responsible for any damage caused to the Radion, your aquarium and its livestock, or your property as a result of improper use of the TIR Lens Kit.
- Installation of the TIR Lens Kit will not affect your existing warranty of the Radion XR30w.



### TOOLS NEEDED:

Phillips screwdriver, 2.5mm & 3mm Allen keys and gloves



**INCLUDED IN TIR LENS KIT:** wire ties (2), TIR lens (2)

View the video at [www.ecotechmarine.com/tirlens/](http://www.ecotechmarine.com/tirlens/)



[www.ecotechmarine.com](http://www.ecotechmarine.com)

610 954 8480  
800 785 0338 (toll free)  
888 500 2907 (fax)

XR695 TIR LENS KIT



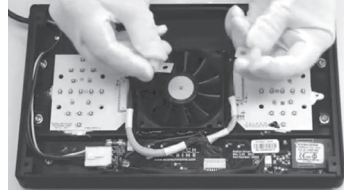
7 13757 58461 6

View the video at  
[www.ecotechmarine.com/tirlens/](http://www.ecotechmarine.com/tirlens/)

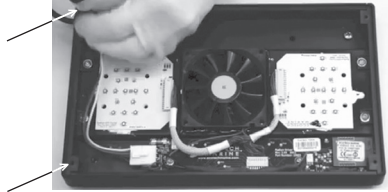


**DO NOT  
OVERTIGHTEN SCREWS.  
IT MAY STRIP SCREWS OR  
DAMAGE THE RADION.**

**STEP 8:** LOCATE SUPPLIED  
WIRE TIES (2).



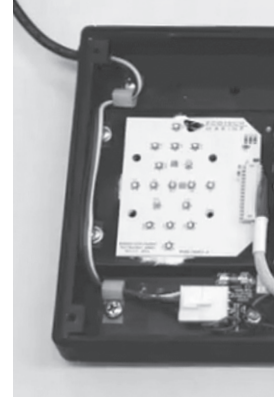
ROUTE WIRES WITH SUPPLIED WIRE TIES  
AND SECURE TO FIXTURE WITH PHILLIPS  
CORNER SCREWS (2).



(Wait to tighten screws.)

**STEP 9:** ROUTE WIRES NEATLY  
ALONG INSIDE WALL AND TIGHTEN  
SCREWS ONCE PROPERLY SET.

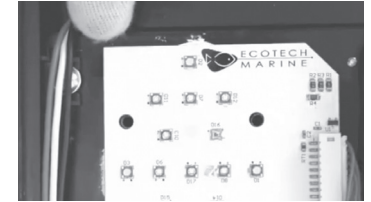
(See image below.)



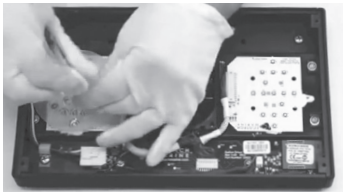
**STEP 10:** ENSURE LENS  
IS ALIGNED AND PLACE IT OVER  
CLUSTER.



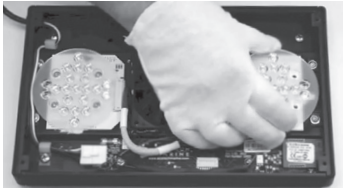
(Adjust wiring if necessary.)



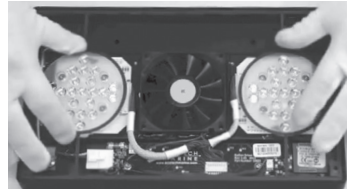
**STEP 11:** AFTER CENTERING  
TIR LENS OVER LED CLUSTER, FASTEN  
2.5MM SCREWS (4) INTO HOUSING.



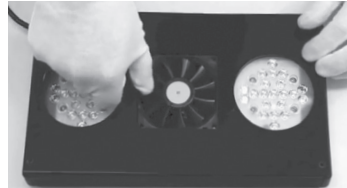
(Repeat this process for second lens.)



**STEP 12:** REPLACE RUBBER GASKET,  
ENSURING THAT IT IS FULLY ALIGNED AND  
SEATED FLAT ON EACH CORNER.

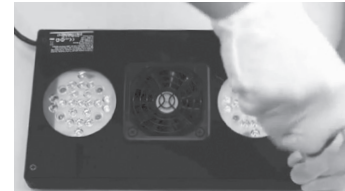


**STEP 13:** REPLACE ACRYLIC BOTTOM  
PLATE AND ENSURE AN EVEN, SNUG FIT.



(Serial number sticker should be visible.)

**STEP 14:** FASTEN REMAINING  
PHILLIPS SCREWS (4) INTO EACH CORNER.



**STEP 15:** ALIGN FAN GRILL  
ASSEMBLY (2 PIECES) AND FASTEN  
PHILLIPS SCREWS (4) INTO FAN HOUSING.



*Note: Upon completion of the TIR lens installation, you will no longer need original clear lens plates or reflectors. The TIR lenses are thinner than the original reflector and plate assembly and will be recessed in the fixture. As with the previous assembly, the TIR lenses make a water-resistant seal with the rubber gasket that was reinstalled in Step 12.*



YOU HAVE SUCCESSFULLY

UPDATED YOUR

RADION XR30w WITH

**TIR  
LENSES.**